



IMPORTANT GUIDELINES FOR THE 2020/2021 SCHOOL YEAR

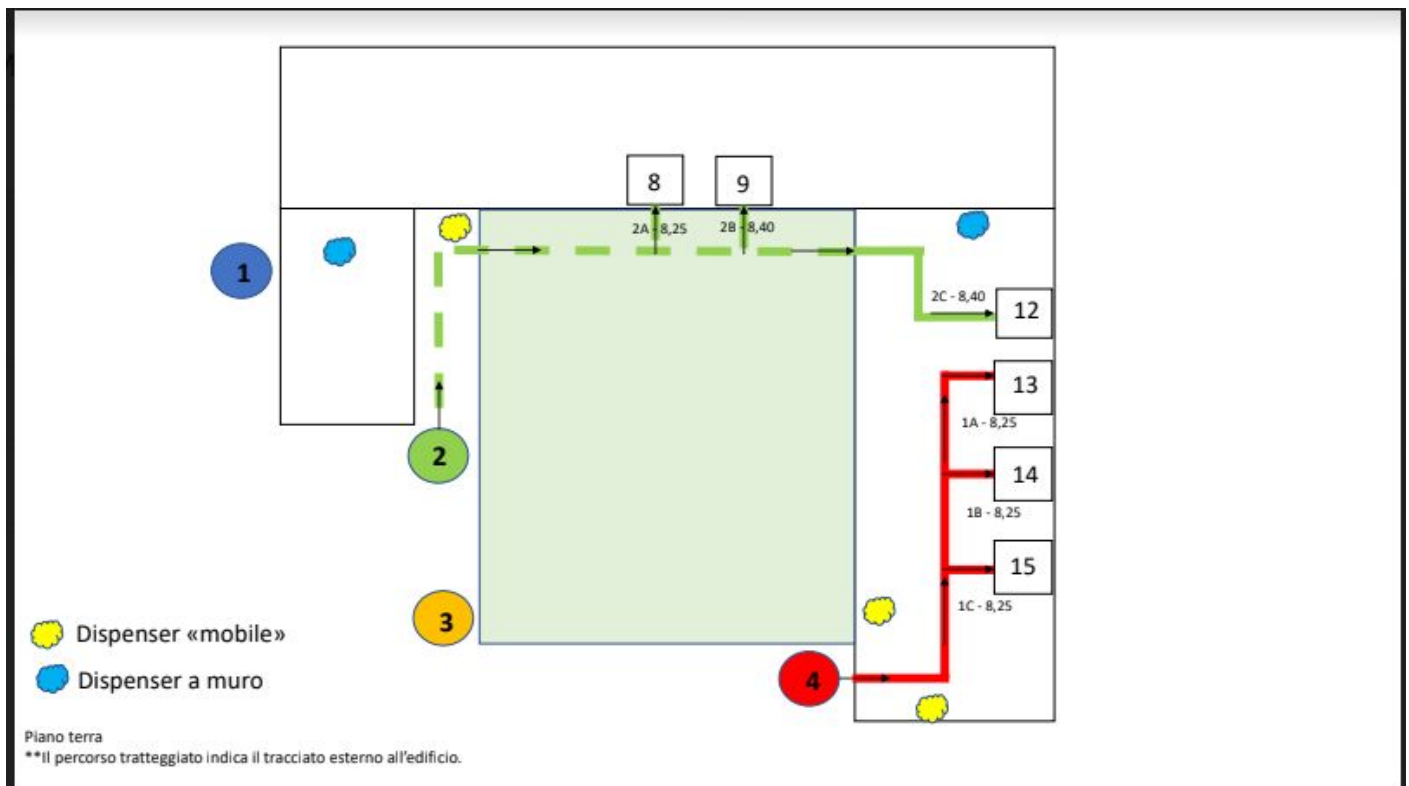
Dear families,

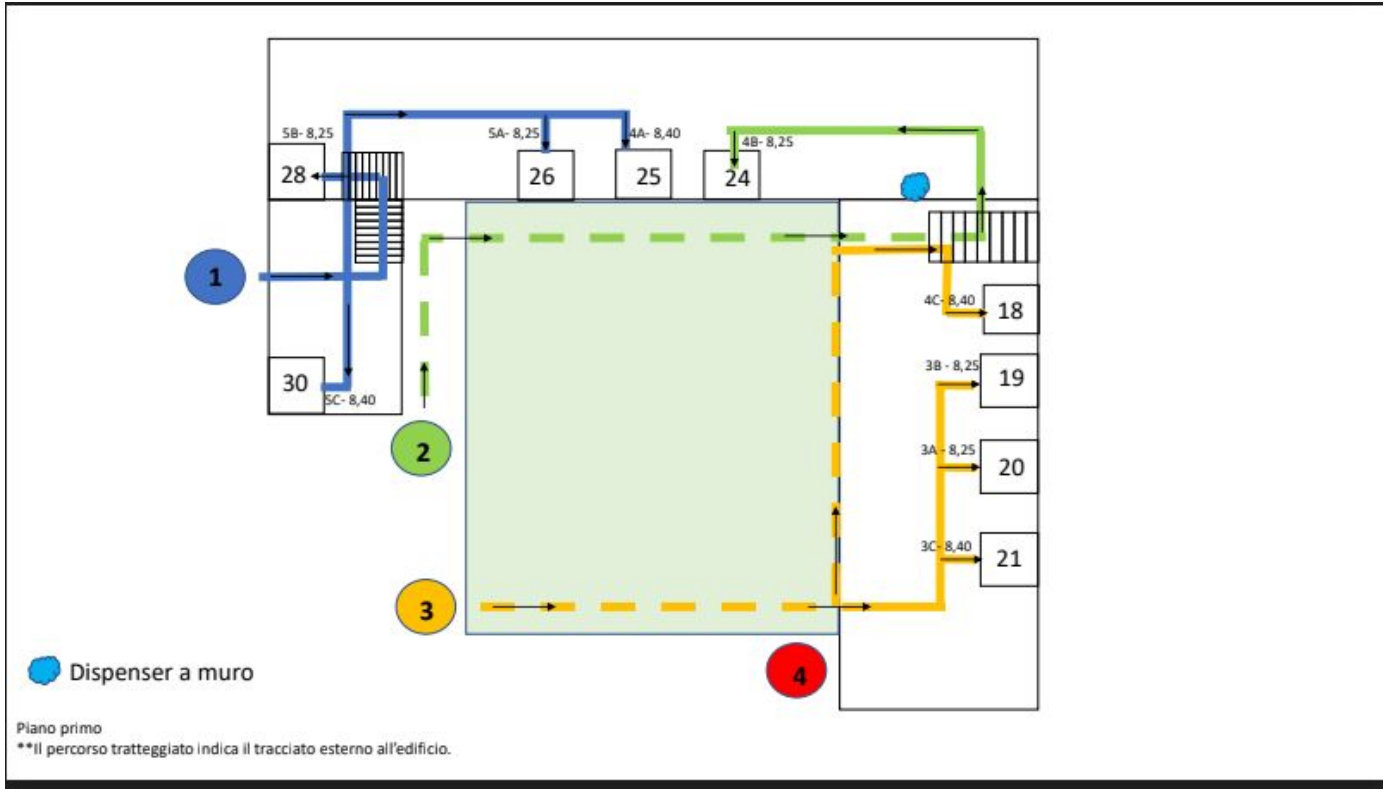
please find below some important information regarding the new safety measures and Covid prevention protocols and rules for the new school year. You are kindly asked to read and explain them carefully to your children.

STARTING THE 2020/2021 SCHOOL YEAR:

Only morning lessons will be held starting from September 14th until October 2nd, from Monday to Friday.

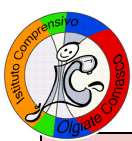
Entrances and exits are diversified and marked with different colors for the classes (please see the map below).





Also the times are a little different: some classes will begin at 8:25 and others at 8:40 (please see the table below).

FIRST DAY 14 th -9-2020		
ENTRANCES	EXITS	
8:45 ENTRANCE 4 class 1A	9:45 ENTRANCE 4 class 1A	
10:00 ENTRANCE 4 class 1B	11:00 ENTRANCE 4 class 1B	
11:15 ENTRANCE 4 class 1C	12:15 ENTRANCE 4 class 1C	



8,25 ENTRANCE 1: CLASSES 5A, 5B ENTRANCE 2: CLASSES 2A, 4B ENTRANCE 3: CLASSES 3A, 3B	EXITS 12,35 ENTRANCE 1: CLASSES 5A, 5B ENTRANCE 2: CLASSES 2A, 4B ENTRANCE 3: CLASSES 3A, 3B	
8,40 ENTRANCE 1: CLASSES 5C, 4A ENTRANCE 2: CLASSES 2B, 2C ENTRANCE 3: CLASSES 3C, 4C	12,50 ENTRANCE 1: CLASSES 5C, 4A ENTRANCE 2: CLASSES 2B, 2C ENTRANCE 3: CLASSES 3C, 4C	
from 15th-9-2020 to 2nd-10-2020		
8,25 ENTRANCE 1: CLASSES 5A, 5B ENTRANCE 2: CLASSES 2A, 4B ENTRANCE 3: CLASSES 3A, 3B ENTRANCE 4: CLASSES 1A, 1B, 1C	EXITS 12,35 ENTRANCE 1: CLASSES 5A, 5B ENTRANCE 2: CLASSES 2A, 4B ENTRANCE 3: CLASSES 3A, 3B ENTRANCE 4: CLASSES 1A, 1B, 1C	
8,40 ENTRANCE 1: CLASSES 5C, 4A ENTRANCE 2: CLASSES 2B, 2C ENTRANCE 3: CLASSES 3C, 4C	12,50 ENTRANCE 1: CLASSES 5C, 4A ENTRANCE 2: CLASSES 2B, 2C ENTRANCE 3: CLASSES 3C, 4C	
from 5th-10-2020		
8,25 ENTRANCE 1: CLASSES 5A, 5B ENTRANCE 2: CLASSES 2A, 4B ENTRANCE 3: CLASSES 3A, 3B ENTRANCE 4: CLASSES 1A, 1B, 1C	EXITS 12,35 ENTRANCE 1: CLASSES 5A, 5B ENTRANCE 2: CLASSES 2A, 4B ENTRANCE 3: CLASSES 3A, 3B ENTRANCE 4: CLASSES 1A, 1B, 1C	AFTERNOONS Monday 14,15-16,25 14,30- 16:40 Wednesday and Friday 14,15- 16,15 14,30- 16,30
ENTRANCES 8,40 ENTRANCE 1: CLASSES 5C, 4A ENTRANCE 2: CLASSES 2B, 2C ENTRANCE 3: CLASSES 3C, 4C	EXITS 12,50 ENTRANCE 1: CLASSES 5C, 4A ENTRANCE 2: CLASSES 2B, 2C ENTRANCE 3: CLASSES 3C, 4C	AFTERNOONS Monday 14,15-16,25 14,30- 16:40 Wednesday and Friday 14,15- 16,15 14,30- 16,30

It is possible for children to enter the school building 15 minutes earlier than their scheduled time only for those children whose brothers/sisters begin classes at 08:00 (the teacher will wait for them in the classroom). Only children who will use the school bus will be allowed to leave the school all at the same time (4 p.m.).



Parents are not allowed to enter the building.

CONDITIONS:

Students may not enter the school if their temperature is equal to or higher than 37,5° C. Temperatures should be taken at home every morning.

If a child shows the following symptoms; a cough, a cold, a sore throat, a headache, vomiting, diarrhea, conjunctivitis (even in the previous 3 days) his parents should contact the doctor.

Children will not be allowed to enter the school if:

If they have had to quarantine or were in home isolation in the previous 14 days;

If they have been in contact with Covid- positive people in the previous 14 days.

Family doctor's opinion is that their health conditions should be investigated in order to find out if they are affected by COVID disease.

ENTERING THE SCHOOL:

Students must enter the school wearing their mask properly and keeping 1 meter distance from the other children.

During the lessons, students will be allowed to lower their mask if they are properly seated at their desk.

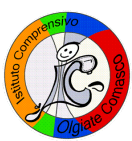
The desks have been correctly spaced (distance at least 1 meter from each other) and the classrooms are constantly ventilated by the open windows.

Pupils can find hands sanitizer dispensers throughout the school and will be encouraged to keep their hands clean.

COVID PREVENTION:

- Teachers and school assistants will be wearing surgical masks in the school.
- During the lessons, teachers are allowed to lower their mask, while maintaining a 2 meter distance from the students.

- Usually students belonging to different classes will not mix up.



- According to the instructions from the Ministry of Health, if a student shows Covid-compatible symptoms while he/she is attending lessons in school, he/she will be led to the School Infirmary, whilst waiting for a parent or a delegate to come and accompany him/her home and the parents should also contact the child's pediatrician. Students will be allowed to come back to school only if they provide a medical certificate
- Parents are kindly invited to contact the school when a child is absent and explain the reasons.
- Students are not allowed to bring to school personal toys or games, nor food (including birthday cakes or candy) to be shared.
- Children at school will be encouraged to learn the new safety rules; parents are kindly invited to do the same at home.

TEACHERS AND SCHOOL STAFF UNDERSTAND AND APPRECIATE VERY MUCH THE EFFORT THAT WILL BE REQUIRED DURING THIS DIFFICULT TIME AND WOULD LIKE TO THANK THE FAMILIES IN ADVANCE FOR THEIR HELP AND COOPERATION.